



NOAA's National Weather Service Philadelphia/Mt. Holly NJ



Issued: Thursday, January 21, 2016 – 5 PM

Next Briefing Package: by 10 AM Friday January 22, 2016

Highlights

A major east coast storm will affect the area this weekend. Important aspects of this storm are as follows:

- Snowfall ranging from 8-16 inches of snow is expected...with lesser amounts near the coast and in the Poconos and far northwest New Jersey. Tight gradients are still expected with the rain/snow line, along the northern edge of the storm. These gradients may shift with future updates.
- Widespread moderate to major coastal and back bay flooding is expected along the Delaware and New Jersey coasts this weekend, including Delaware Bay. Low-end moderate flooding is now possible along Raritan Bay and the Monmouth County coast. A strong onshore flow will persist through three tide cycles. Flooding is not expected along the Chesapeake Bay north of Cambridge.
- Strong northeast winds gusting between 50 and 60 knots are expected over the coastal waters of Delaware and New Jersey with this storm. A Storm Watch is in effect for these areas from late Friday night through Sunday morning.
- Strong northeast winds gusting between 50 and 60 mph are possible near the coast from Friday night into early Sunday morning. Northeast wind gusts in the 25 to 45 mph range are expected further inland.

Building a Weather Ready Nation @ www.weather.gov/phi



NWSMountHolly



@NWS_MountHolly

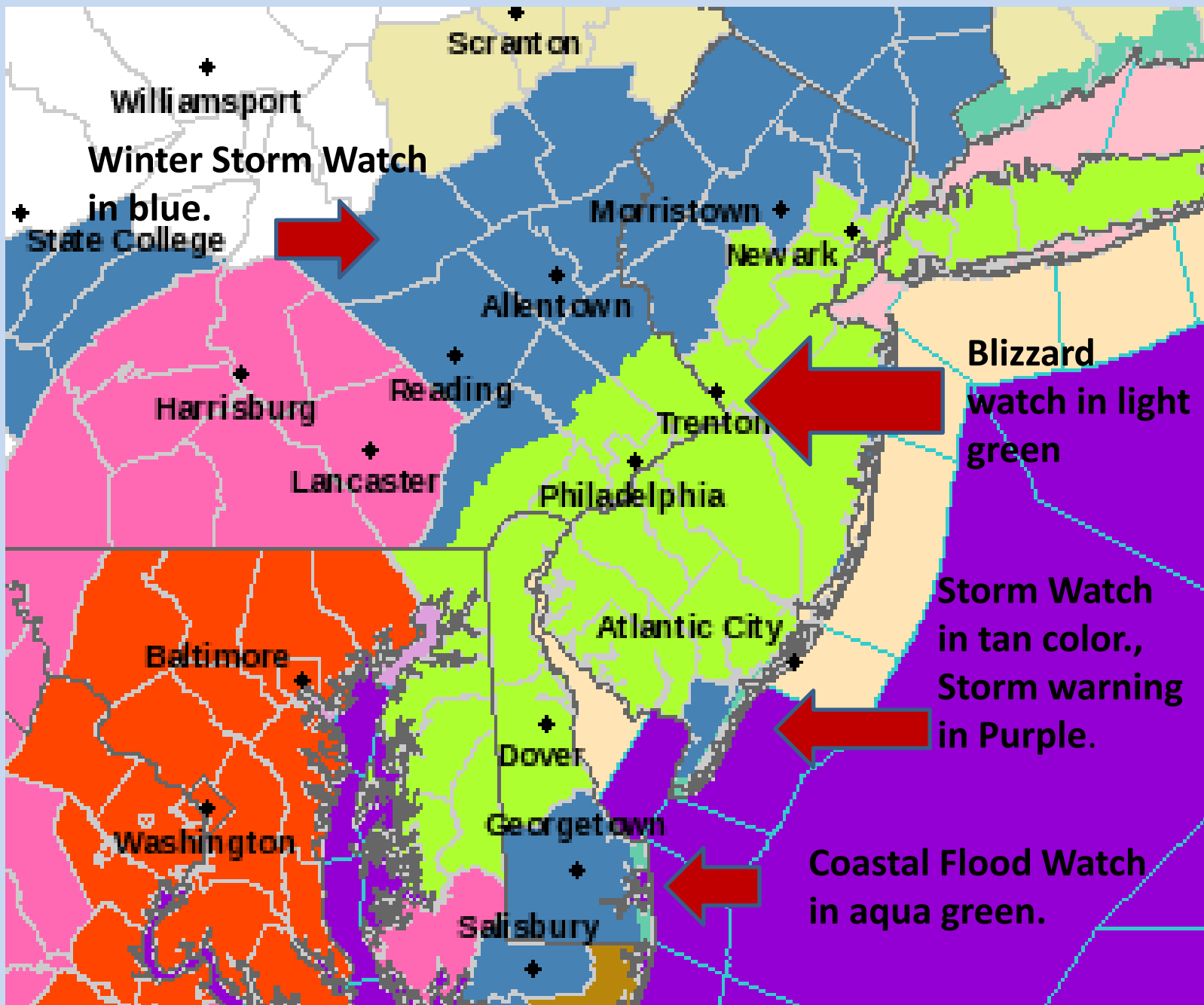


NOAA's National Weather Service Philadelphia/Mt. Holly NJ



Issued: Thursday, January 21, 2016 – 5 PM

Next Briefing Package: by 10 AM Friday January 22, 2016



Building a Weather Ready Nation @ www.weather.gov/phi



NWSMountHolly



@NWS_MountHolly



NOAA's National Weather Service Philadelphia/Mt. Holly NJ



Issued: Thursday, January 21, 2016 – 5 PM

Next Briefing Package: by 10 AM Friday January 22, 2016

Hazards and Impacts:

- **Power outages possible due to heavy snow and/or wind.**
- **Widespread coastal flooding with property damage and road closures is expected...especially at the times of high tide on Saturday and Sunday morning.**
- **Heavy and wet snow may be difficult to plow and shovel, especially for those with physical ailments.**
- **Snowfall totals are expected to cut off sharply closer to the coast given that snow is expected to change to rain in those areas. Sharp cutoffs are also possible near the northern edge of the storm depending on its final path.**

Building a Weather Ready Nation @ www.weather.gov/phi



NWSMountHolly



@NWS_MountHolly

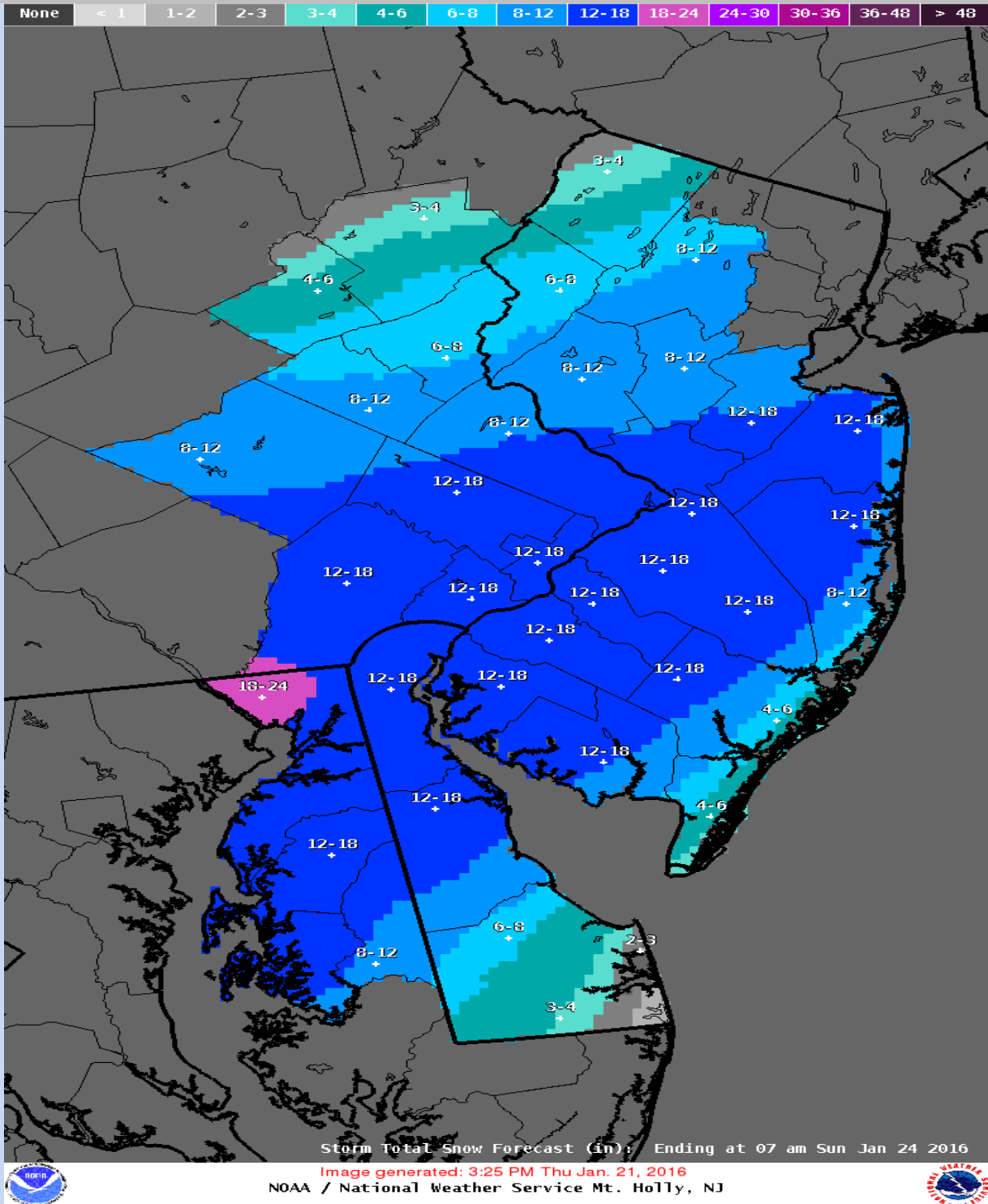


NOAA's National Weather Service Philadelphia/Mt. Holly NJ



Issued: Thursday January 21, 2016 – 5 PM

Next Briefing Package: by 10 AM Friday January 22, 2016



Most likely Snowfall accumulations
www.weather.gov/phi/winter

Building a Weather Ready Nation @ www.weather.gov/phi



NWSMountHolly



@NWS_MountHolly

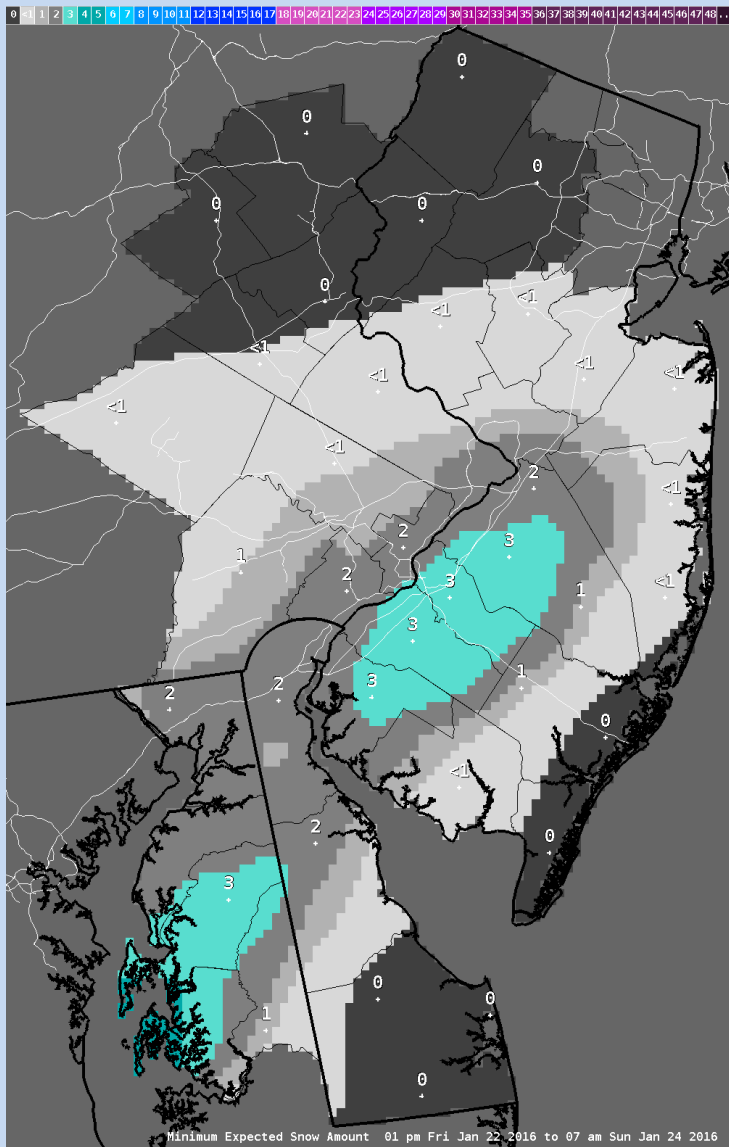


NOAA's National Weather Service Philadelphia/Mt. Holly NJ

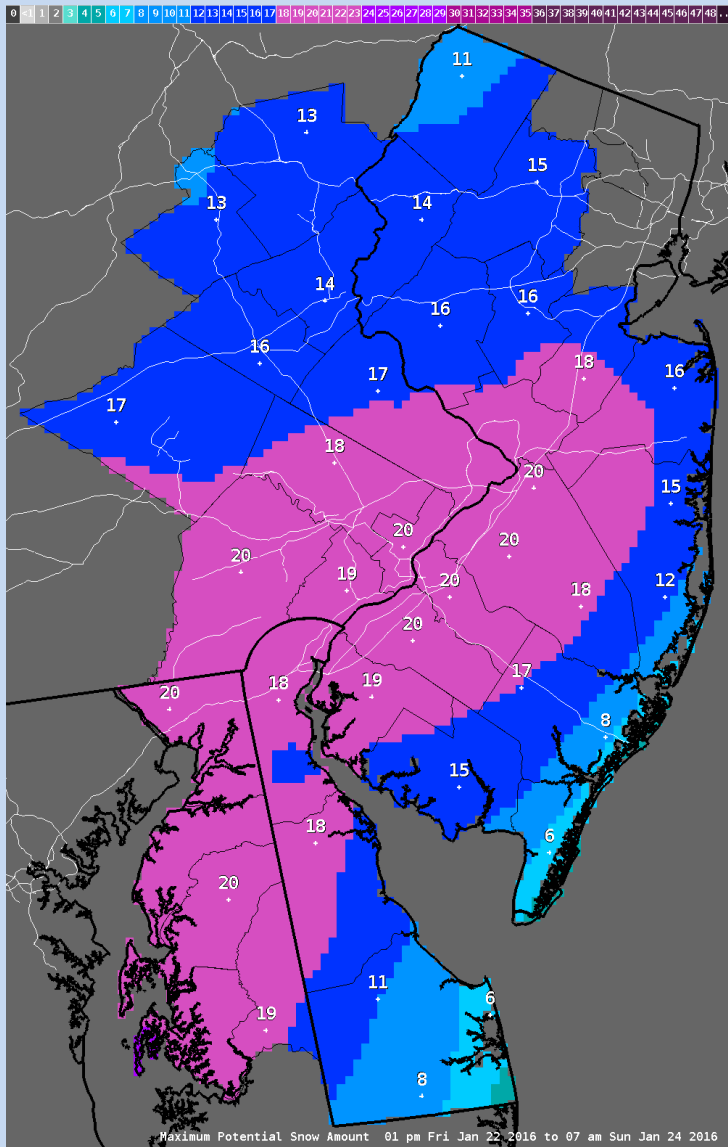


Issued: Thursday January 21, 2016 – 5 PM

Next Briefing Package: by 10 AM Friday January 22, 2016



Minimum Snow Forecast



Maximum Snow Forecast

These two maps provide reasonable estimates of possible minimum (left) and maximum (right) snowfall amounts from this event based on statistical analysis of model guidance. They are experimental and do **not** represent the official NWS forecast. Larger images are available at www.weather.gov/phi/winter

Building a Weather Ready Nation @ www.weather.gov/phi



NWSMountHolly



@NWS_MountHolly

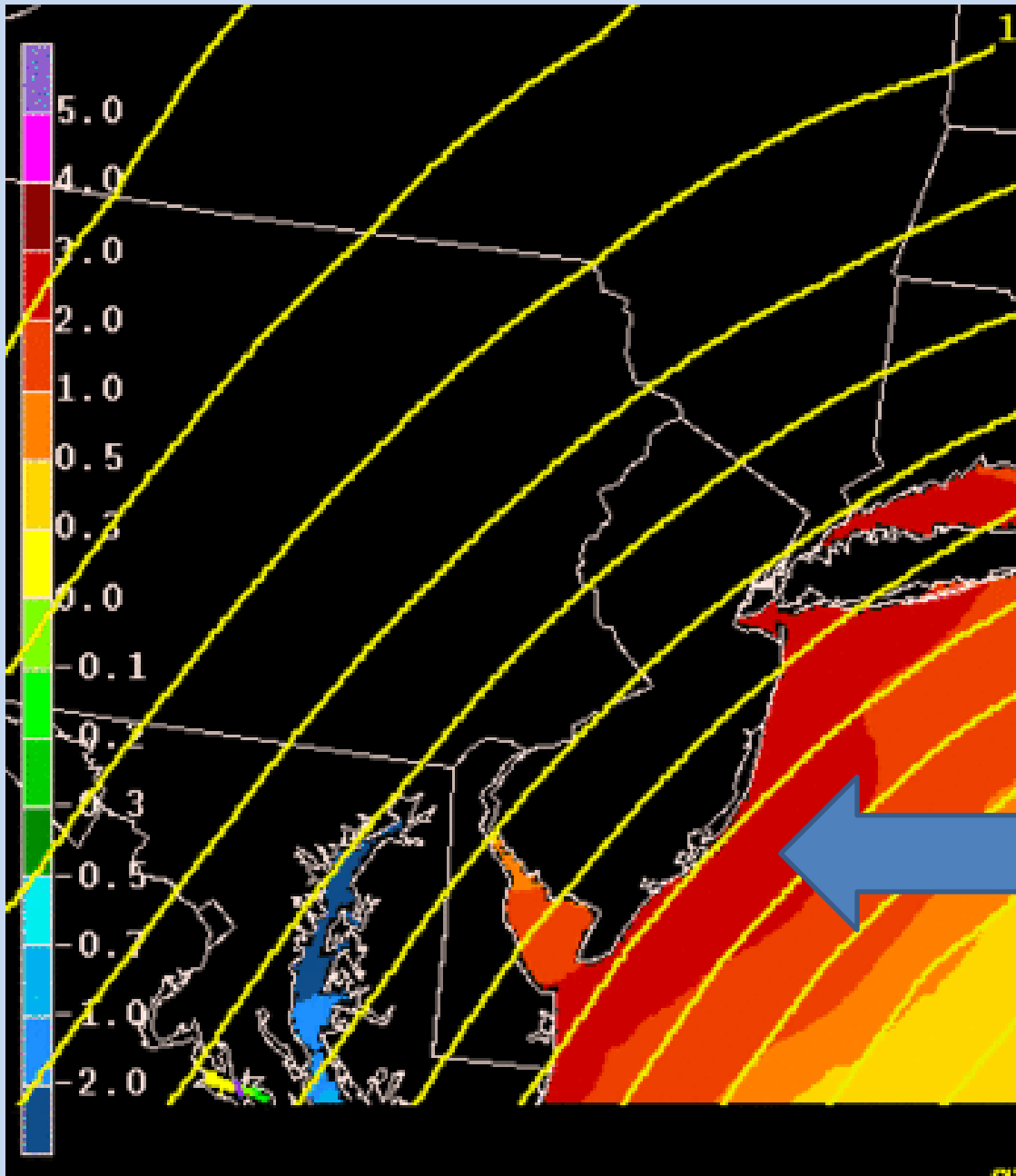


NOAA's National Weather Service Philadelphia/Mt. Holly NJ



Issued: Thursday, January 21, 2016 – 5 PM

Next Briefing Package: by 10 AM Friday January 22, 2016



Tidal Departures at 7 AM Sunday (around high tide). Note 2-3 FT departures along the coast and portions of Delaware Bay (bright red). These departures will also be present for the Saturday morning high tide.

Building a Weather Ready Nation @ www.weather.gov/phi



NWSMountHolly



@NWS_MountHolly

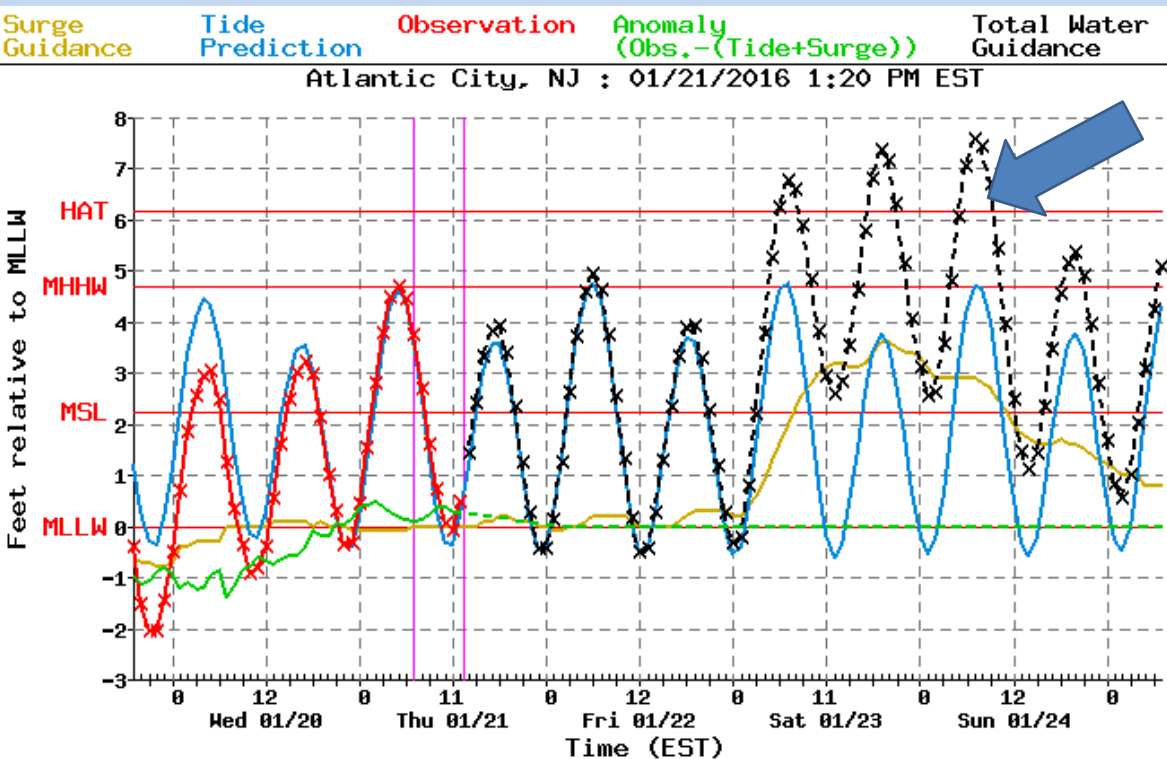


NOAA's National Weather Service Philadelphia/Mt. Holly NJ

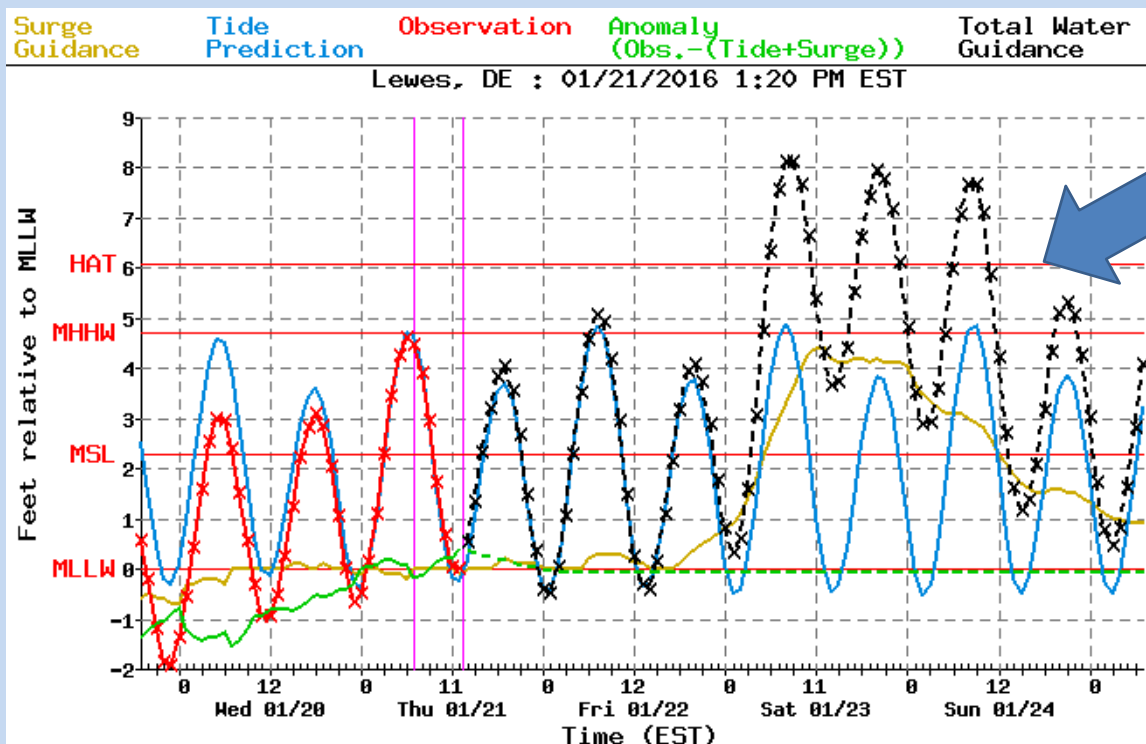


Issued: Thursday, January 21, 2016 – 9 AM

Next Briefing Package: by 5 PM Thursday, January 21, 2016



These charts show the potential for moderate to major coastal and back bay flooding with the high tides Saturday morning through Sunday morning (3 high tides). Total water levels are expected to be higher in the south, such as Lewes (bottom graph) vs. Atlantic City (top graph).



Minor to Moderate coastal flooding is also expected along the Delaware Bay and minor flooding is expected Raritan Bay in northern New Jersey.

Coastal flooding is not expected along the Chesapeake Bay north of Cambridge.

Building a Weather Ready Nation @ www.weather.gov/phi



NWSMountHolly



@NWS_MountHolly



NOAA's National Weather Service Philadelphia/Mt. Holly NJ

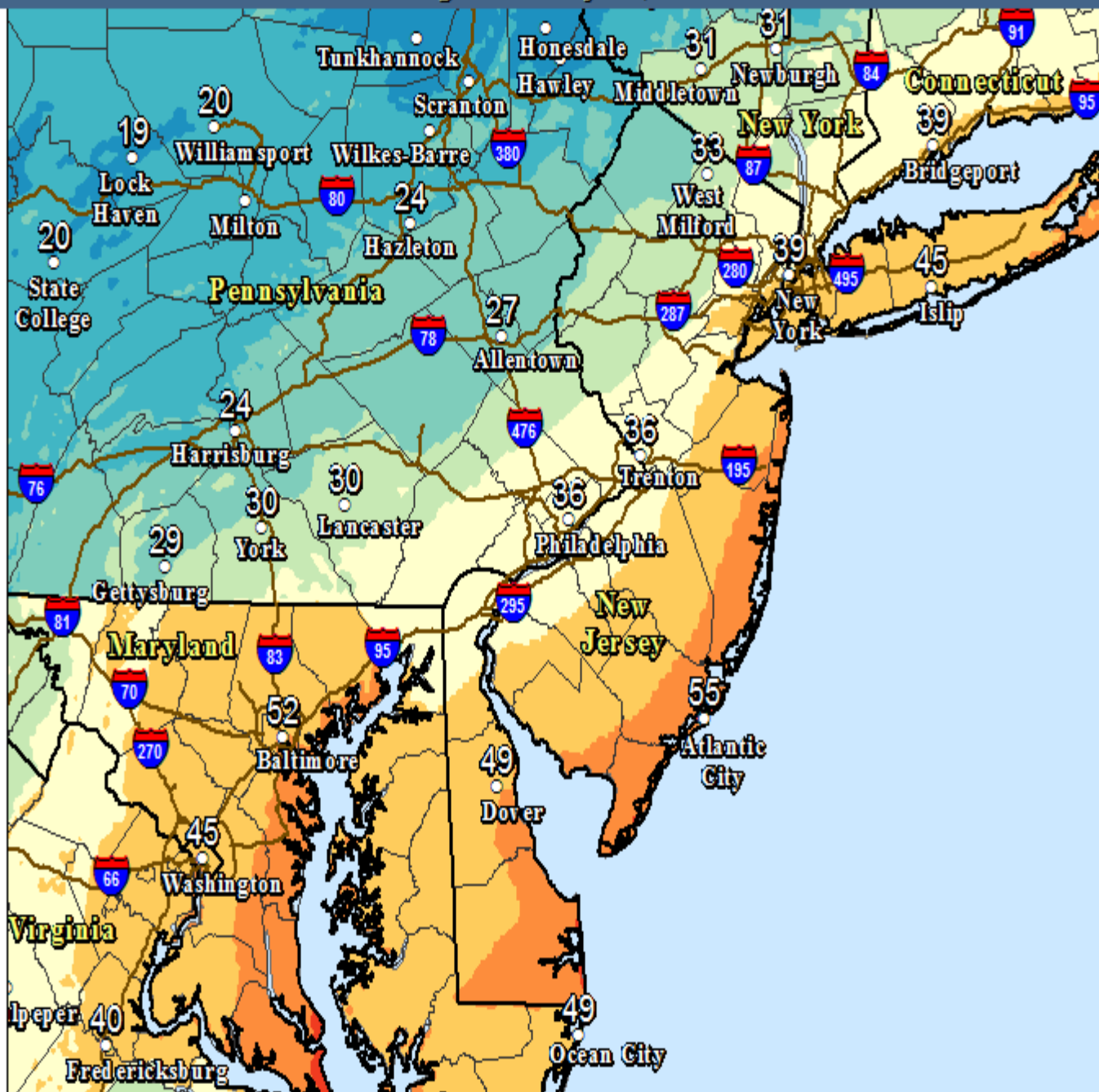
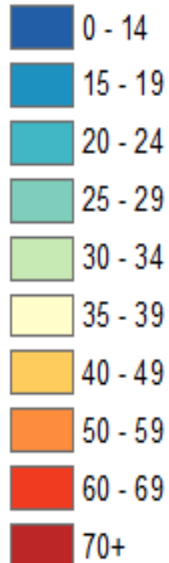


Issued: Thursday, January 21, 2016 – 9 AM

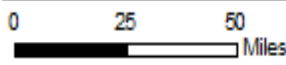
Next Briefing Package: by 5 PM Thursday January 21, 2016

Maximum Wind Gust - Through January 23, 2016 7:00 PM ET

MPH



Created by the
NWS Forecast Office
Philadelphia/Mt Holly



Source: NWS National
Digital Forecast Database

Created: 01/21/2016 2100 UTC

Maximum wind gusts (MPH) through 7 PM January 23, 2016

Building a Weather Ready Nation @ www.weather.gov/phi



NWSMountHolly



@NWS_MountHolly



NOAA's National Weather Service Philadelphia/Mt. Holly NJ



Issued: Thursday, January 21, 2016 – 9 AM

Next Briefing Package: by 5 PM Thursday January 21, 2016

- For the latest information, visit our website at:
 - www.weather.gov/phi
- Our latest briefing package is available from our website at:
- http://www.weather.gov/media/phi/current_briefing.pdf
- If you wish to be notified when a briefing package is issued, you can follow us on social media where we post the notice.
- You can 'friend' us on Facebook at: US National Weather Service Philadelphia/Mount Holly
- You can follow us on Twitter @NWS_MountHolly
- If you have any questions, please contact us.
- Gary.Szatkowski@noaa.gov
 - Office 609-261-6602 x222
- Joseph.Miketta@noaa.gov
 - Office 609-261-6602 x223

Building a Weather Ready Nation @ www.weather.gov/phi



NWSMountHolly



@NWS_MountHolly