

Heavy Rainfall and Tropical Threat for July 3rd- July 5th

Prepared 430 PM EDT – Monday, June 30, 2014

Mitchell Gaines / Joe Miketta

NOAA's National Weather Service

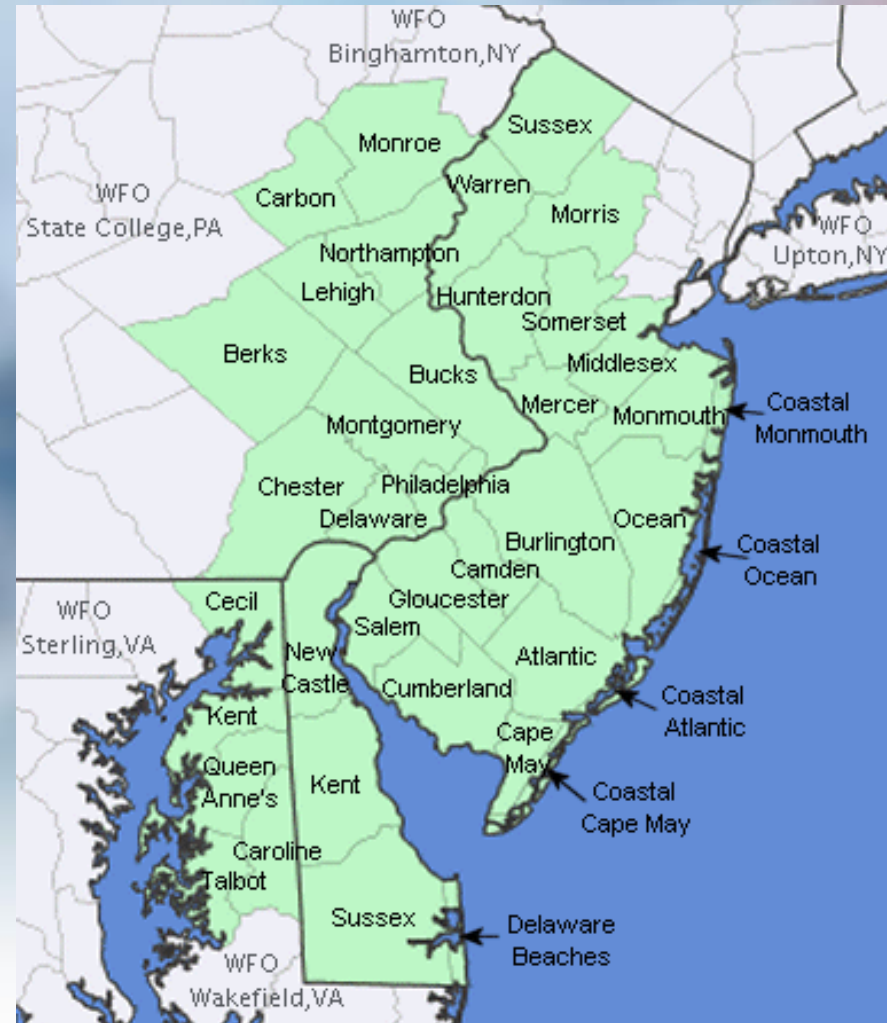
Philadelphia/Mt. Holly NJ Forecast office

www.weather.gov/phi/



Purpose of Briefing

- Briefing #1
- Promote situational awareness for emergency management community & partners
- Provide guidance for planning efforts
- Briefing applies to Mount Holly service area – shaded in green on map



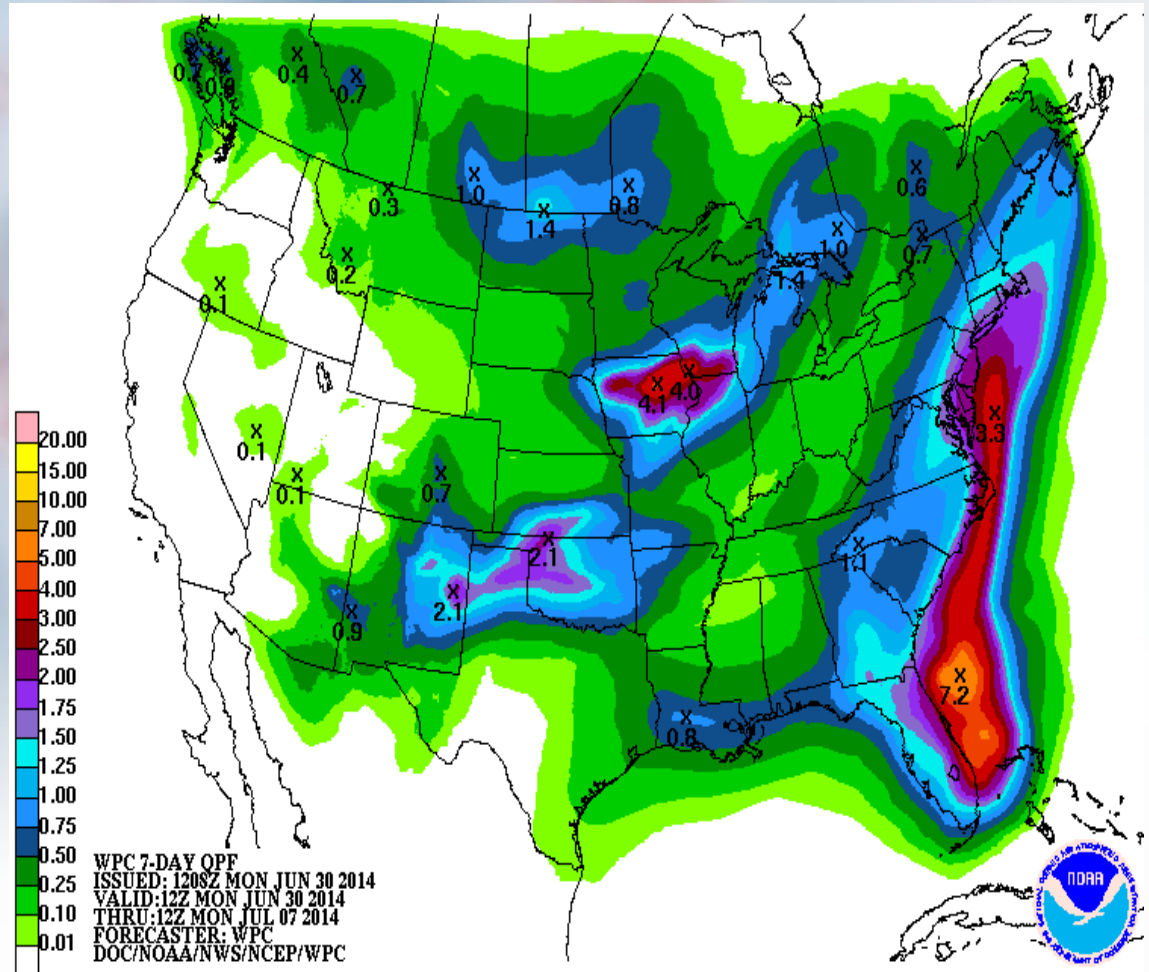
Executive Summary

- A series of cold frontal boundaries will move into the region Wednesday-Friday. Tropical moisture moving north is expected to intersect with these boundaries, producing showers and thunderstorms, mainly Thursday afternoon into Friday.
- Showers and thunderstorms could be slow moving with heavy rainfall. Some flash flooding is possible where thunderstorms stall or train over the same regions.
- An area of low pressure now forming off the southeast US coastline is likely to become a tropical system within the next 48 hours according to the National Hurricane Center. The interaction of this system with the aforementioned fronts could lead to an enhanced heavy rain threat.
- There is still some uncertainty with the track of this low pressure system. However, a majority of the data suggests an eventual northerly track to the Carolina coastline before curving northeast off the Mid-Atlantic coastline.
- Depending on the eventual track of this low, winds and tides may be of concern, especially Thursday and Friday.
- Rip currents will also be a major threat throughout most of the July 4th holiday weekend.
- This is NOT Super Storm Sandy. No landfall is expected in New Jersey or Delaware. However...heavy rain, winds, tidal and fresh water flooding, rip currents, and heavy surf are possible as we head into a major holiday weekend. Stay tuned for the latest information at www.weather.gov/phi.
- Another briefing package will be issued by 5 PM Tuesday.

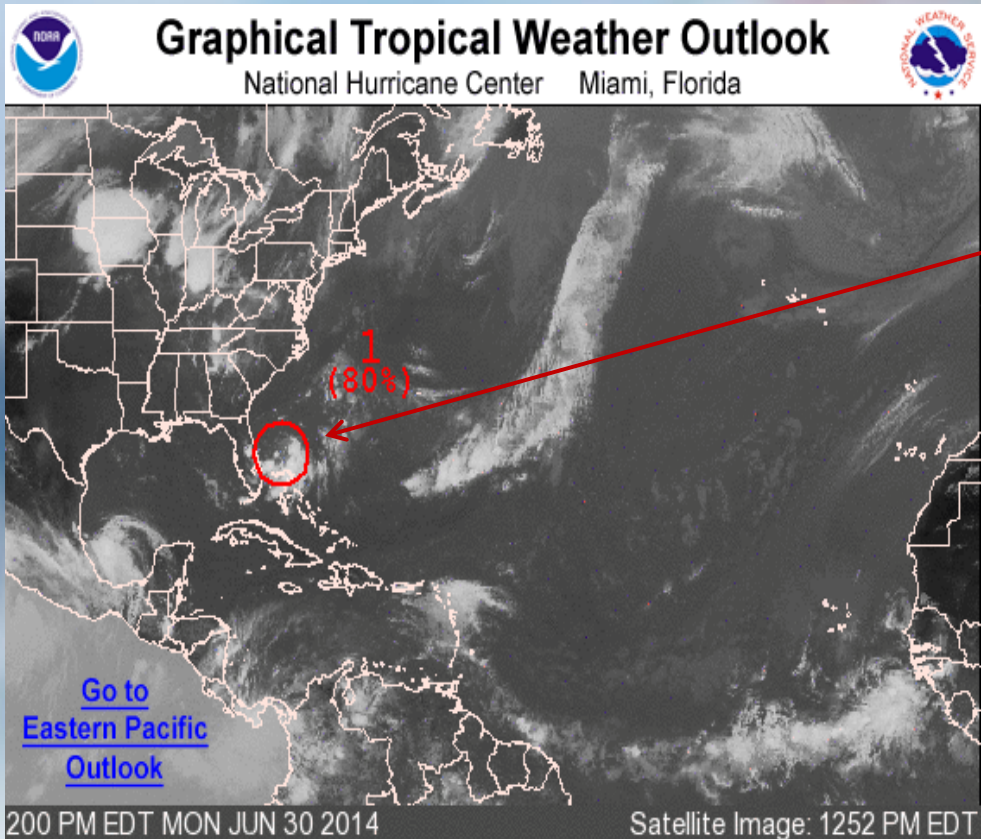


Potential Total Rainfall From Wednesday through Saturday

- Highest amounts are most likely toward the coast.



National Hurricane Forecast Map



The National Hurricane Center has outlined a an area of low pressure for an 80% chance of development into a tropical depression or storm within the next 48 hours.

Outlined areas denote current position of systems discussed in the Tropical Weather Outlook. Color indicates probability of tropical cyclone formation within 48 hours.

Low <30% Medium 30-50% High >50%



Questions?

- For the latest information, visit our website at:
 - www.weather.gov/phi
- Our latest briefing package is available from our website at:
 - http://www.erh.noaa.gov/phi/briefing/packages/current_briefing.pdf
- If you wish to be notified when a briefing package is issued, you can follow us on social media where we post the notice.
- You can ‘friend’ us on Facebook at: US National Weather Service Philadelphia/Mount Holly
- You can follow us on Twitter @NWS_MountHolly
- The next briefing will be issued by 4:00 pm on Tuesday the 1st
- If you have any questions, please contact us.
- Joseph.Miketta@noaa.gov
 - Office 609-261-6602 x223
- Raymond.Kruzdlo@noaa.gov
 - Office 609-261-6605 x234

